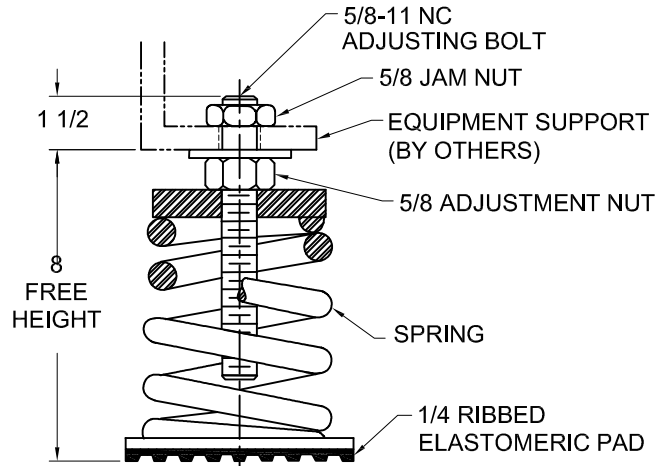
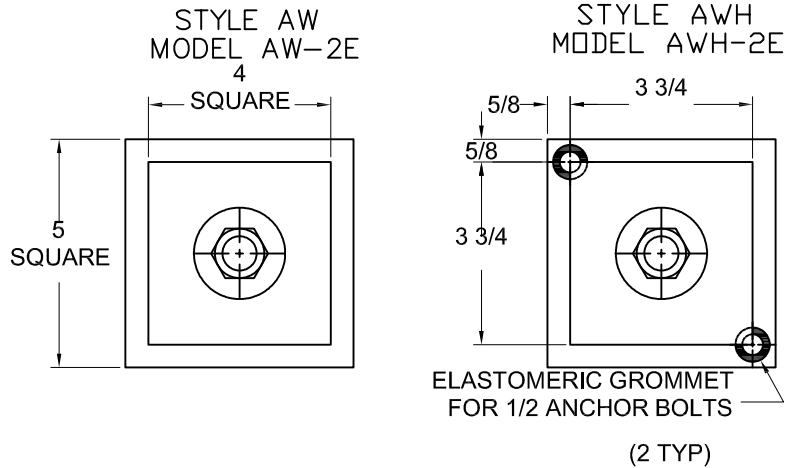


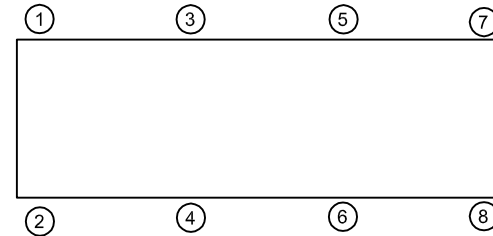
REV.	DESCRIPTION	DATE	BY



- NOTES:
1. ALL DIMENSIONS ARE IN INCHES. INTERPRET PER ANSI Y-14.
 2. FINISH: HOUSING- ONE COAT BLACK PAINT, SPRING- BLACK PAINT, HARDWARE- ZINC ELECTROPLATE.
 3. REFER TO DRAWING 2 OF 2 FOR INSTALLATION INSTRUCTIONS.
 4. INNER SPRING (WHEN USED) NOT SHOWN.
 5. ALL SPRINGS DESIGNED WITH 50% OVER-TRAVEL.
 6. RATED DEFLECTIONS ARE WITHIN 25% OF NOMINAL. HIGHER DEFLECTIONS ARE ALLOWED IF THEY MEET SPECIFICATIONS

TYPES AW & AWH-2E SPRING-FLEX MOUNTINGS				
MODEL	MAX LOAD (LBS)	DEFLECTION (IN)	SPRING RATE (LB/IN)	SPRING COLOR CODE
AW*-2E-80 ²	80	2.00	40	BLACK
AW*-2E-150 ²	150	2.00	75	GREEN
AW*-2E-300 ²	300	2.00	150	DK YELLOW
AW*-2E-500 ²	500	2.00	250	BLUE
AW*-2E-776N ^{1,2}	776	2.00	388	BLUE/BLACK
AW*-2E-1000 ²	1000	2.00	500	TAN
AW*-2E-1400 ²	1400	1.87	749	RED
AW*-2E-1600N ^{1,2}	1600	2.13	750	TAN/RED
AW*-2E-1800 ²	1800	1.71	1053	DK GRAY
AW*-2E-2050 ²	2050	1.64	1250	DK BLUE
AW*-2E-2250N ^{1,2}	2250	1.62	1389	DK BLUE/BLACK
AW*-2E-2460N ^{1,2}	2460	1.64	1500	DK BLUE/RED
AW*-2E-2700N ^{1,2}	2700	1.64	1646	DK BLUE/ DK GREEN

- NOTES:
1. TWO NESTED SPRINGS YIELD THIS LOAD. THE COLOR CODE INDICATED IS FOR OUTER SPRING/ INNER SPRING.
 2. TO COMPLETE MODEL NUMBER, ADD STYLE LETTER (F USED) IN PLACE OF *.
 3. LOAD WILL BE LABELED ON ISOLATOR AND STENCILED ON BASE PLATE.



ISOLATOR SELECTIONS	
LOC 1:	LOC 2:
LOC 3:	LOC 4:
LOC 5:	LOC 6:
LOC 7:	LOC 8:
CUSTOMER EQP'T. TAG:	

NOTE: MATERIAL SHOWN IS FOR (1) SET.

OTHER MATERIALS, COMPOUNDS, OR FINISHES WITH EQUAL OR SUPERIOR PROPERTIES MAY BE SUBSTITUTED AS THEY BECOME AVAILABLE.

CERTIFIED FOR:

JOB NAME: _____
 CUSTOMER: _____
 CUSTOMER P.O.: _____
 SALES ORDER: _____

MODEL AW AND AWH-2E 80-2700 LBS.
 OPEN SPRING-FLEX MOUNT 2 INCH
 DEFLECTION



THE VMC GROUP
 The Power of Together
 Bloomingdale, NJ 07403
 Houston, TX 77041

SCALE:

NONE

SHEET:

1 OF 2



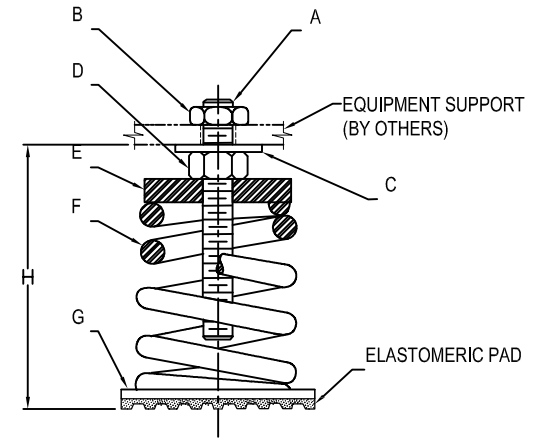
DRAWING NO.:

REVISION

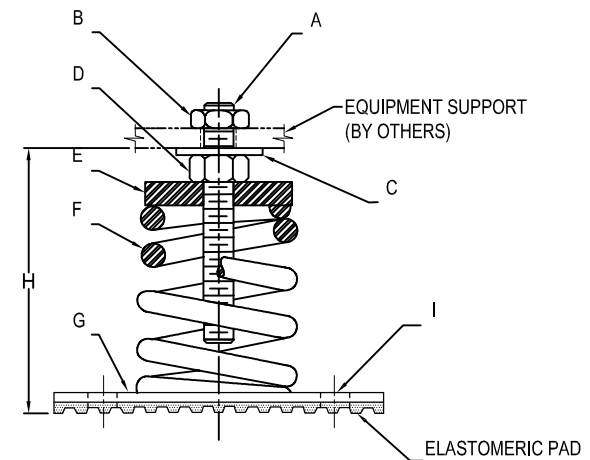
REV.	DESCRIPTION	DATE	BY

INSTALLATION INSTRUCTION

- ISOLATORS ARE SHIPPED FULLY ASSEMBLED AND ARE TO BE SPACED AND ARRANGED IN ACCORDANCE WITH INSTALLATION DRAWINGS OR AS OTHERWISE RECOMMENDED.
- SET ISOLATORS ON FLOOR OR SUB-BASE, ENSURING THAT ALL ISOLATOR CENTERLINES MATCH THE EQUIPMENT MOUNTING HOLES OR SPACE AND ARRANGE ISOLATORS IN ACCORDANCE WITH THE INSTALLATION DRAWING. SHIM OR GROUT AS REQUIRED LEVELING ALL ISOLATOR BASE PLATES AT THE SAME ELEVATION (1/4" MAXIMUM DIFFERENCE IN ELEVATION CAN BE TOLERATED). ISOLATOR BASE MUST REST ON A FLAT SURFACE.
- DESIGNATION OF ISOLATORS IS SHOWN ON TAG / LABEL ATTACHED TO EACH ISOLATOR OR ISOLATORS MAY BE IDENTIFIED BY SIZE OF BASE PLATE AND / OR SPRING COLOR CODE.
- IF FLOOR FASTENING IS REQUIRED, PLACE MOUNT AS INDICATED ON NOTE 1 THRU 3 AND ANCHOR USING (2) ANCHOR THRU HOLES "I" ON STEEL PLATE "G" (APPLIES ONLY TO **STYLE AWH** MOUNT).
- REMOVE JAM NUT "B" FROM ADJUSTING BOLT "A", TURN ADJUSTING NUT "D" COUNTER-CLOCKWISE TO SET "H" FOR ALL ISOLATORS.
- POSITION EQUIPMENT OVER THE ISOLATORS, ALIGN MOUNT ADJUSTING BOLT "A" TO EQUIPMENT BASE MOUNTING THRU HOLES.
- LOWER EQUIPMENT UNTIL IT REST ON ADJUSTING NUT WASHER "C" (SPRING WILL COMPRESS)
- INSERT JAM NUT "B" ON ADJUSTING BOLT "A".
- LEVEL EQUIPMENT BY TURNING ADJUSTING NUT "D" AS REQUIRED
- TIGHTEN JAM NUT "B". INSTALLATION IS COMPLETE



STYLE - AW



STYLE - AWH

CERTIFIED FOR:

JOB NAME: _____
 CUSTOMER : _____
 CUSTOMER P.O.: _____
 SALES ORDER: _____

MODEL AW AND AWH-2E 80-2700 LBS.
 OPEN SPRING-FLEX MOUNT 2 INCH
 DEFLECTION



THE VMC GROUP
The Power of Together
 Bloomingdale, NJ 07403
 Houston, TX 77041

SCALE: NONE
 SHEET: 2 OF 2



DRAWING NO.: _____ REVISION _____